

## Verschraubung TYP GLM

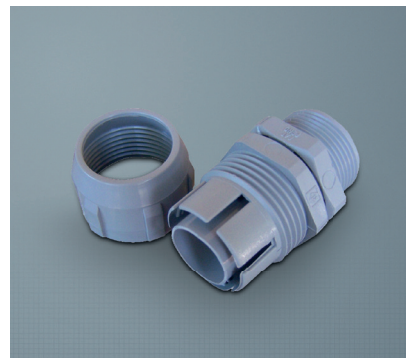
**Material:** Polyamid  
**Ausführung:** Aussengewinde, drehbar  
**Schutzart:** IP67 / UL94 V0  
**Temperaturbereich:** -20°C bis +80°C

**GLM:** Grau RAL 7001  
**GLMG:** Hellgrau RAL 7035  
**GLMN:** Schwarz RAL 9005

## Fitting TYPE GLM

**Material:** Polyamide  
**Execution:** Swivelling male thread  
**Protection Rating:** IP67 / UL94 V0  
**Temperature Range:** -20°C up to +80°C

**GLM:** Grey RAL 7001  
**GLMG:** Light grey RAL 7035  
**GLMN:** Black RAL 9005



**Auf Anfrage:**  
auch in Zoll lieferbar

**On request:**  
in GAS available



### GEWINDEART METRISCH

Art. Nr. Art. No.	Gewinde Thread	Schlauch NW Conduit DN	SW mm	GL mm	ID mm	VPE Stk. Unit pcs.
GLM*10M12	M12	10	22	11,0	8	50
GLM*12M16	M16	12	24	11,0	10	50
GLM*16M20	M20	16	29	13,5	13	50
GLM*20M25	M25	20	33	13,5	18	50
GLM*22M25	M25	22	36	13,5	20	50
GLM*25M32	M32	25	40	17,0	23	25
GLM*28M32	M32	28	43	17,0	25	25
GLM*32M40	M40	32	48	18,0	30	25
GLM*35M40	M40	35	52	18,0	33	20
GLM*40M50	M50	40	58	19,0	38	15
GLM*50M63	M63	50	70	19,5	48	10

**Geeignet für Schläuche des Typs**  
For conduit types



### GEWINDEART PG

Art. Nr. Art. No.	Gewinde Thread	Schlauch NW Conduit DN	SW mm	GL mm	ID mm	VPE Stk. Unit pcs.
GLM*08PG07	PG07	8	19	11,0	6	50
GLM*10PG07	PG07	10	22	11,0	8	50
GLM*10PG09	PG09	10	22	11,0	8	50
GLM*10PG11	PG11	10	22	11,0	8	50
GLM*10PG13	PG13,5	10	22	11,0	8	50
GLM*12PG09	PG09	12	24	11,0	10	50
GLM*12PG11	PG11	12	24	11,0	10	50
GLM*12PG13	PG13,5	12	24	11,0	10	50
GLM*14PG11	PG11	14	27	13,5	12	50
GLM*14PG13	PG13,5	14	27	13,5	12	50
GLM*16PG13	PG13,5	15/16	29	13,5	13	50
GLM*16PG16	PG16	15/16	29	13,5	13	50
GLM*18PG16	PG16	18	33	13,5	16	50
GLM*20PG21	PG21	20	33	13,5	18	50
GLM*22PG21	PG21	22	36	13,5	20	50
GLM*25PG21	PG21	25	36/40	13,5	20	25
GLM*25PG29	PG29	25	40	17,0	23	25
GLM*28PG29	PG29	27/28	43	17,0	25	25
GLM*32PG29	PG29	32	48	18,0	30	25
GLM*35PG36	PG36	35/36	52	18,0	33	20
GLM*40PG36	PG36	40	58	19,0	38	15
GLM*50PG48	PG48	50	70	19,5	48	10

**Technische Zeichnung**  
Engineering drawing

