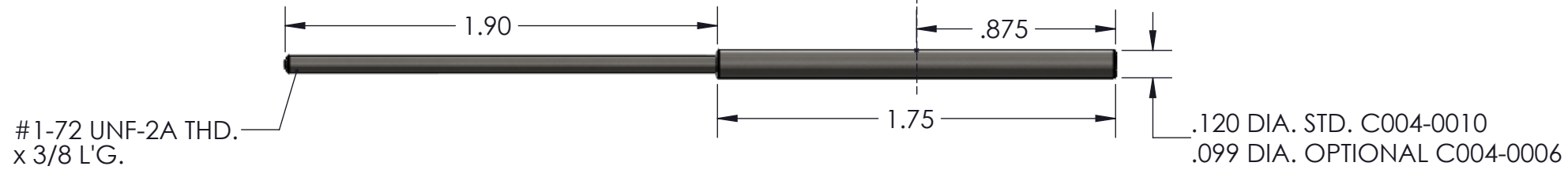
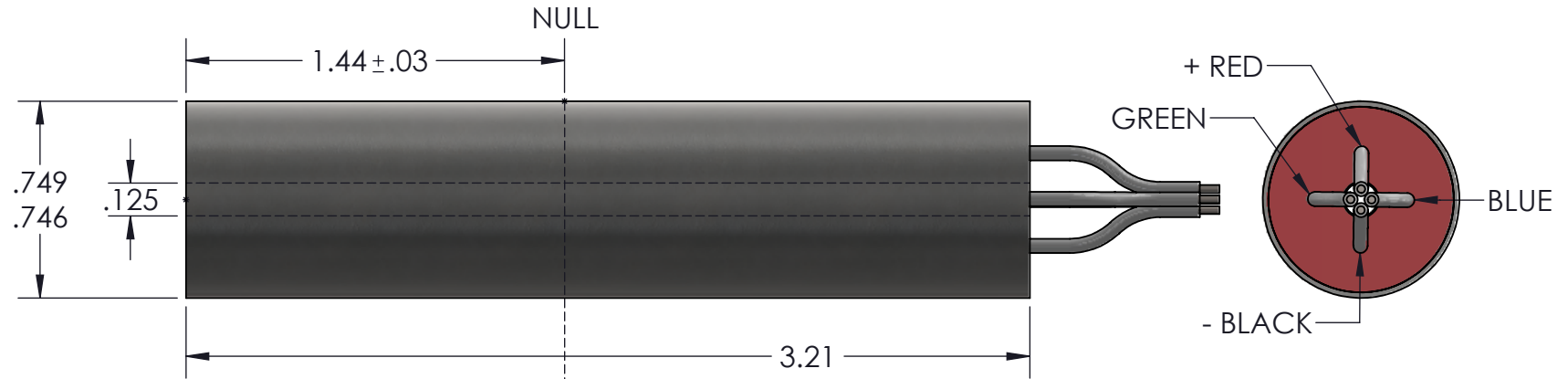


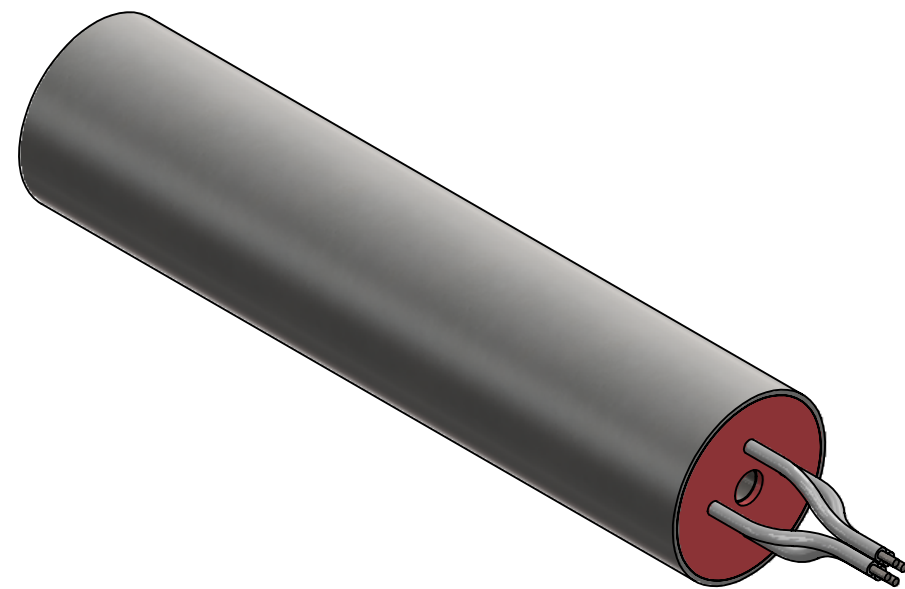
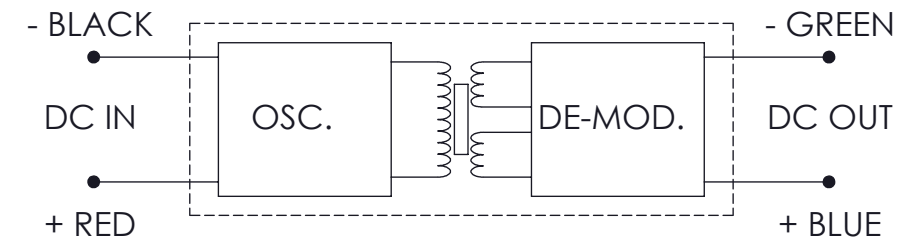
NOTES

SPECIFICATIONS

1. RANGE: ± 0.25 INCHES
2. INPUT VOLTS, DC: 3V MIN., 30V MAX.
3. INPUT CURRENT: 40mA @ 24 V.
4. OUTPUT, FULL SCALE DC, OPEN CIRCUIT: ±7V @ 24 V INPUT
5. SCALE FACTOR VOLTS/INCH: 28 @ 24V INPUT
6. LINEARITY, % FULL SCALE: ± 0.5
7. INTERNAL CARRIER FREQ. Hz NOM.: 3600
8. RIPPLE (RMS) % NOM.: 0.8
9. OUTPUT IMPEDANCE: 5200Ω
10. FREQ. RESPONSE 3db DOWN Hz: 115
11. TEMP. RANGE: -65°F TO +250°F
12. RESOLUTION: INFINITE
13. TERMINATION: #22 AWG x 18" L'G. TEFLON INSUL. LEADS
14. MODEL NO. 0242-0000



POLARITY OF EXCITATION MUST BE OBSERVED FOR PROPER FUNCTION. REVERSAL WILL NOT DAMAGE UNIT. POLARITY REVERSAL PROTECTED.



1ST. USED ON

REVISIONS

ECN 749
MFK 11/12/15

E		F		G		H		J		K			
MATERIAL				FINISH				TOOLING					
ALL MACH. SURF. MAX UNLESS OTHERWISE SPEC.		1. UNLESS OTHERWISE SPEC. ALL THDS. TO UN CLASS 2A OR 2B EFFECTIVE ENGAGEMENT TO BE 75% #6 AND UP, 60% #5 AND DOWN. 2. DIM. () DENOTES OUT OF SCALE. 3. ALL DIM. SHOWN ARE AFTER PLATING. 4. EXCEPT AS NOTED, ALL DIMENSIONS ARE IN INCHES.				TOLERANCE (UNLESS OTHERWISE SPECIFIED) X.X = ±.03 X.XX = ±.010 X.XXX = ±.005 ANGULAR = ±1°		DR'N. BY / DATE GT 8/6/69		CHECKED BY SEE SUPERSEDED		TITLE CONTROL DRAWING DISPLACEMENT TRANSDUCER	
TRANS-TEK INCORPORATED Route 83 Ellington, Connecticut 06029				SCALE: 3:2 DO NOT SCALE DWG.		PROJ. ENG. APP. DEV. ENG. APP. MFG. ENG. APP.		SS 8-7-69 MFK 11/12/15		DWG. SIZE B		PART NO. C012-0018	REV. 1