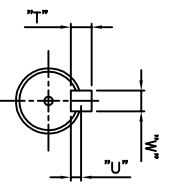
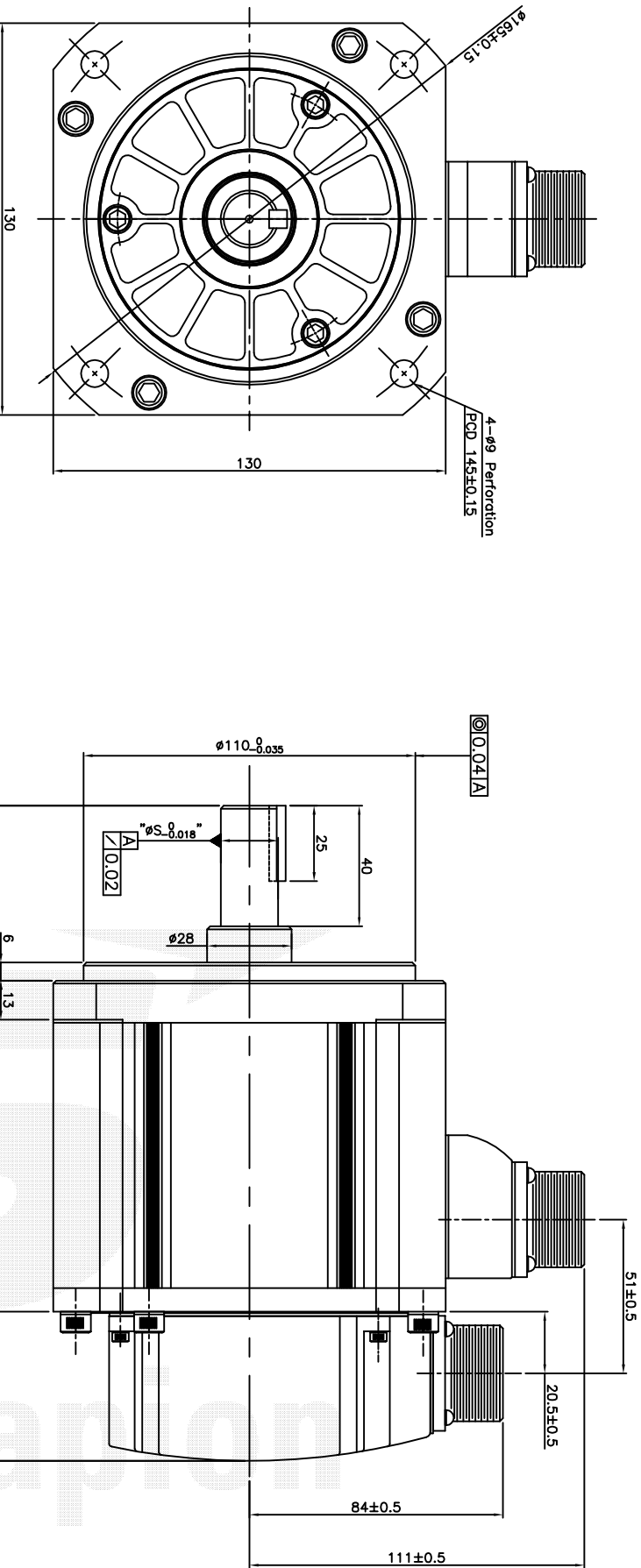
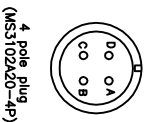


수요수량	품번	품명	재질	규격	비고
G04 G03 G02 G01	ITEM	DESCRIPTION	MATERIAL	SPECIFICATION	REMARK
		Out Line	FE Series	FE Type	

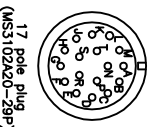


<측단 치수 상세도>



4 pole plug (MS3102A20-4P) (Power Supply Connector Pins)

Pin No.	Phase
A	U
B	V
C	W
D	Ground



17 pole plug (MS3102A20-17P)

Pin No.	Phase	Pin No.	Phase
1	A	10	V
2	B	11	W
3	C	12	NC
4	D	13	NC
5	E	14	NC
6	F	15	NC
7	G	16	NC
8	H	17	Shield
9	I		
10	J		
11	K		
12	L		
13	M		
14	N		
15	O		
16	P		
17	Q		

(Incremental Encoder Connector Pins)

<외형 치수>

군번	Model	External Dimensions (mm)						Key			
		L	LM	LC	S	T	W	U			
01	FE09A, FE06D, FE05G, FE03M	197.3	139.3	89.8	19	5	5	3			
02	FE15A, FE11D, FE09G, FE06M	217.3	159.3	109.8	22	6	6	3.5			
03	FE22A, FE16D, FE13G, FE09M	237.3	179.3	129.8	24	7	7	4			
04	FE30A, FE22D, FE17G, FE12M	255.3	197.3	147.8	24	7	8	4			

XGT Servo Motor		Encoder Type	
제품명	Code	제품명	Code
XML-FE09AEK	-	XML-FE09AEKE	-
XML-FE15AEK	-	XML-FE15AEKE	-
XML-FE22AEK	-	XML-FE22AEKE	-
XML-FE30AEK	-	XML-FE30AEKE	-
XML-FE06DEK	-	XML-FE06DEKE	-
XML-FE11DEK	-	XML-FE11DEKE	-
XML-FE16DEK	-	XML-FE16DEKE	-
XML-FE22DEK	-	XML-FE22DEKE	-
XML-FE05GEK	-	XML-FE05GEKE	-
XML-FE09GEK	-	XML-FE09GEKE	-
XML-FE13GEK	-	XML-FE13GEKE	-
XML-FE17GEK	-	XML-FE17GEKE	-
XML-FE03MEK	-	XML-FE03MEKE	-
XML-FE06MEK	-	XML-FE06MEKE	-
XML-FE09MEK	-	XML-FE09MEKE	-
XML-FE12MEK	-	XML-FE12MEKE	-

Incremental -3000[P/R]

TO

CHANGE

개



XML-FE09AMK의 15종

매수 SHEETS

상각	척도	단위	작성일
3RD ANGLE PROJECTION	SCALE	DIMENSION	DATE
	NS	MM	XXXX.XX.XX
제도	설계	검토	승인
DRAWN	DESIGNED	CHECKED	APPROVED

도면명칭	도면번호
TITLE	DWG. NO.
XGT Servo Motor(임시도면)	XML-FE09AMK의 15종

1/1

관련도면	Ver:1.0
REF. NO.	