

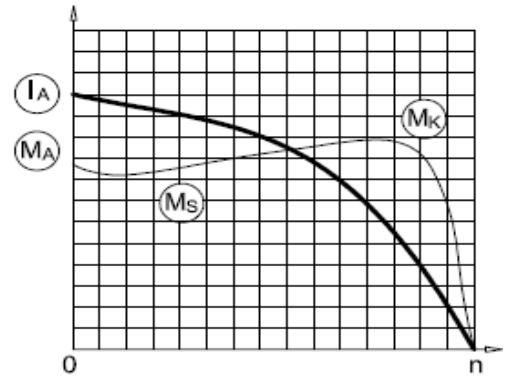
AGM2E 112 M 6

IE2

GAMAK

3-Phase 230/400 V 50 Hz

Duty Type : S1
 Degree of protection : IP 55 (TEFC)
 Insulation class : F (155 °C)
 Temp rise : Class B (80K)
 Mounting Design : B3



ELECTRICAL DESIGN

Direct On Line

Rated output (kW) : 2.2
 Speed (rpm) : 950
 Rated current (A) : 5.4
 Torque – Mn (Nm) : 22
 Cos φ : 0.72
 Efficiency % : 81.8 (4/4), 81.7 (3/4), 78.5 (1/2)
 Moment of inertia J (kgm)² : 0.013

Locked rotor Current – Ia (A) : 25
 Ia / In : 4.7
 Locked rotor Torque – Ma (Nm) : 48
 Ma / Mn : 2.2

Y / Δ Starting

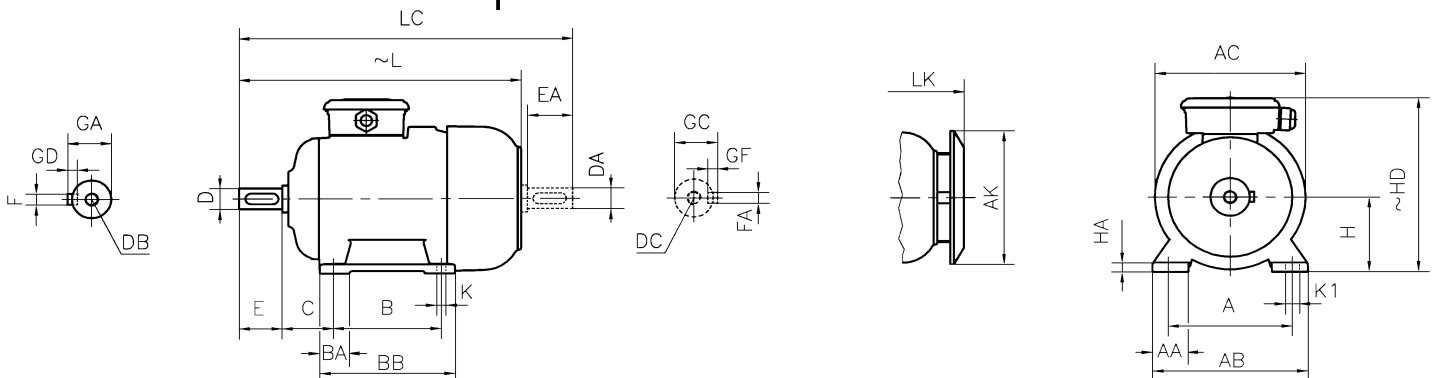
Locked rotor Current – Ia (A) : -
 Ia / In : -
 Locked rotor Torque – Ma (Nm) : -
 Ma / Mn : -
 Breakdown Torque – Mk (Nm) : 55
 Mk / Mn : 2.5

MECHANICAL DESIGN

Frame : Aluminium
 End shields : Aluminium
 Cooling fan : Plastic
 Terminal box : Plastic
 Cable gland : Pg 16
 No of cable glands : 2

Bearing Arrangement

	Drive End	Non Drive End
Standard design	6206 ZZ	6206 ZZ
Reinforced design	-	-
Noise Level (dB-A)	: 55	
Paint	: RAL 7031- Grey	
Approximate weight (kg)	: 26.5	



DIMENSIONS

Dimensions of foot mounted motors for mounting arrangement : B3, B6, B7, B8, B15, V5, V6																							
H	HD ~	HA	A	AA	AB	ØAC	ØAK	K	K1	B	B'	BA	BA'	BB	L ~	LC	LK ~	C	E EA	DB DC	ØD ØDA	GA GC	FxGD FAXGF
112	257	13	190	47	230	218	189	12	18	140	-	39	-	175	396	462	433	70	60	M10	28	31	8X7

* Efficiencies are calculated according to indirect method where the additional load losses are determined from exact measurements at different load points.