

# Differential pressure switch for air, flue and exhaust gases

LGW...A2, LGW...A2P  
LGW...A2-7

**DUNGS**<sup>®</sup>  
Combustion Controls

5.13

neuvovità  
nouveau new

LGW...A2, LGW...A2-7

• RoHS 2002/95/EG



## Technical description

The differential pressure switches LGW...A2... are adjustable differential pressure switches as per EN 1854 for automatic burner controls.

Suitable for switching a circuit on, off or over on changes in actual pressure value relative to the set reference value.

The reference value (switching point) is adjusted on a setting wheel provided with a scale. On LGW...A2P: test button integrated in lower part as standard.

## Application

Differential pressure monitoring in firing, ventilation and air-conditioning systems. Suitable for air, flue and exhaust gases and other non-aggressive gases as differential pressure switches; not suitable for industrial combustion gases.

## Approvals

EC type test approval as per EC Gas Appliance Directive:

CE-0085 AQ 0673

EC type test approval as per EC Pressure Equipment Directive:

CE0036

Pressure switch class "S" as per EN 1854.

Special designs for the North American market with U<sub>L</sub>, FM and CSA registrations.

Approvals in other important gas-consuming countries.

### Functional description

Differential pressure switch in pressure and vacuum range. The differential pressure acts via the diaphragm against the force of the setting spring on the microswitch. The pressure switch operates without auxiliary power.

### Differential pressure switch

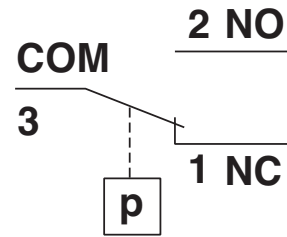
The control unit responds to differential pressure. If the set reference value (mbar) is exceeded or undershot, the circuit is switched on, off or over.

### LGW...A2P test button

The LGW...A2P differential pressure switch is equipped with a test button. The test button permits a service-friendly check of the safety function. If the test key is pressed while the pressure exists, the connection to the pressure connection **G 1/4** is interrupted and the pressure under the diaphragm is released. The microswitch of the pressure switch changes the contact position from NO to NC. If the test button is released, the pressure below the diaphragms is built up again and the microswitch changes to its original position.

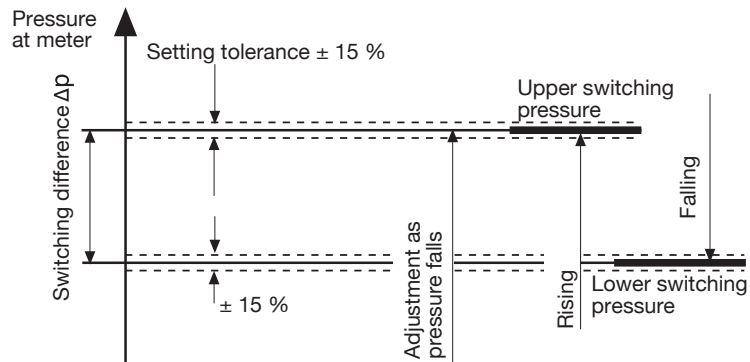
### Switching function

**As pressure rises:**  
1 NC opens, 2 NO closes  
**As pressure falls:**  
1 NC closes, 2 NO opens

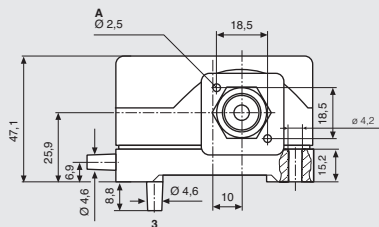


### Definition of switching difference $\Delta p$

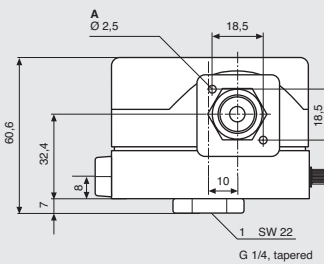
The switching difference  $\Delta p$  is the pressure difference between the upper and lower switching pressures.



### Dimensions [mm] LGW...A2, LGW...A2-7

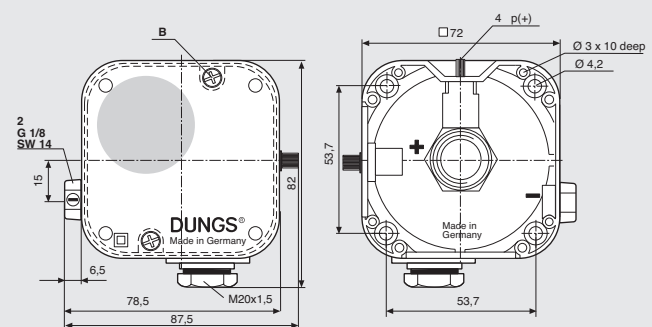
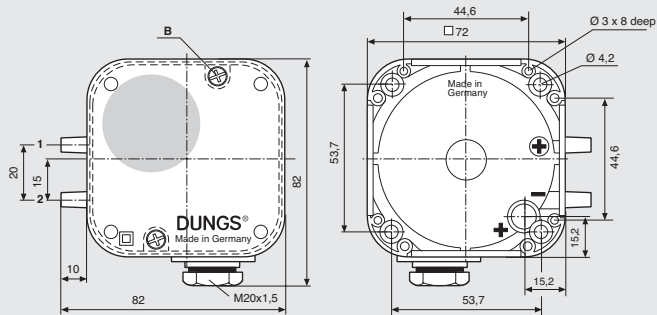


### LGW...A2P



Pressure connection (+)  $\varnothing 4.6$  can only be used as test nipple. Pressure connection only possible using G 1/4.

G 1/4, tapered

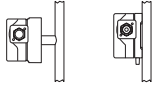
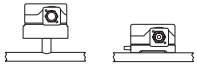
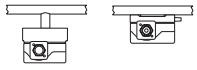
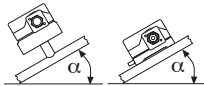


- A 2.5 dia for equipment plugs as per DIN EN 175 301-803
- B Oblong slot: 0.8 and cross-head as per DIN 7962-Z 2
- 1 Pressure connection (+)
- 2 Pressure connection (-)
- 3 Only LGW... A2 optional pressure connection (+)
- 4 Test button p (+)

## Specifications

Max. operating pressure	LGW 3 A2 - LGW 150 A2	500 mbar (50 kPa)		
	LGW 3 A2P - LGW 150 A2P	500 mbar (50 kPa)		
	LGW 1,5 A2-7 - LGW 30 A2-7	100 mbar (10 kPa)		
Ranges	<b>LGW...A4, ...A2P</b>	<b>LGW...A2-7</b>		
	0.4 - 3 mbar	20 - 150 Pa		
	1 - 10 mbar	20 - 300 Pa		
	2.5 - 50 mbar	30 - 600 Pa		
	30 - 150 mbar	0.1 - 1 kPa		
		0.2 - 3 kPa		
Pressure connection	<b>LGW...A2, LGW...A2-7:</b> hose gland $\varnothing$ 4.6 mm			
	<b>LGW...A2P:</b> G 1/4 tapered female thread for higher pressure on centre of housing underside, including test button and on the side 4.6 dia. test point; G 1/8 female thread for lower pressure.			
Temperature range	Ambient temperature	<b>LGW...A2, LGW...A2P</b>	<b>LGW...A2-7</b>	
	Medium temperature	-15 °C bis +70 °C	-15 °C bis +85 °C	
	Storage temperature	-15 °C bis +70 °C	-15 °C bis +85 °C	
		-30 °C bis +85 °C	-30 °C bis +85 °C	
Materials	Housing	Polycarbonat		
	Switch	Polycarbonat		
	Diaphragms	NBR		
	Switching contact	LGW...A2, A2P Ag, optional Ag gold plated (Au)		
		LGW...A2-7 Ag, gold plated (Au)		
		Au contacts are suitable for DDC applications: DC 24 V; 0.01 A		
Switching voltage	Ag contact	AC eff.	min. 24 V	max. 250 V
		DC	min. 24 V	max. 48 V
	Au contact	DC	min. 5 V	max. 24 V
Nominal current	Ag contact LGW...A2, A2P	AC eff.	10 A	
	Ag contact LGW...A2-7	AC eff.	6 A	
	Au contact	DC	20 mA	
Switching current	Ag contact LGW...A2, A2P	AC eff. at $\cos \varphi$ 1	min. 20 mA	max. 6 A
	Ag contact LGW...A2, A2P	AC eff. at $\cos \varphi$ 0,6	min. 20 mA	max. 3 A
	Ag contact LGW...A2-7	AC eff. at $\cos \varphi$ 1	min. 20 mA	max. 4 A
	Ag contact LGW...A2-7	AC eff. at $\cos \varphi$ 0,6	min. 20 mA	max. 2 A
		DC	min. 20 mA	max. 1 A
	Au contact	DC	min. 5 mA	max. 20 mA
Electrical connection	Standard	At screw terminals via M20x1.5 cable entry		
	Special design	Plug connection for line sockets as per DIN EN 175 301-803, 3-pin		
Degree of protection	IP 54 IEC 529 (EN 60529), protection insulated, optional IP 65			
Setting tolerance	$\pm$ 15 % switching point deviation, relative to nominal value, with vertical mounting position. Rising ( $\uparrow$ ) or falling ( $\downarrow$ ) setting available on site.			

## Installation position





	Standard installation position $\pm$ 0 mbar or $\pm$ 0 Pa
	Installed horizontally ca. +0,5 mbar or +50 Pa
	Horizontally overhead ca. -0,5 mbar or -50 Pa
	Intermediate installation position max $\pm$ 0,5 mbar or $\pm$ 50 Pa

Differential pressure switch for air,  
flue and exhaust gases

LGW...A2, LGW...A2P  
LGW...A2-7

**DUNGS**<sup>®</sup>  
Combustion Controls

**Technical data**      1 mbar = 100 Pa = 0,1 kPa ≈ 10 mm WS      1 Pa = 0,01 mbar ≈ 0,1 mm WS

Type	Version [AG-M-V9]	Order No.	Setting range	Justage	Switching difference
<b>LGW...A2 Differential pressure switch</b>	LGW 3 A2	107 409	0,4 - 3 mbar		≤ 0,3 mbar
	LGW 10 A2	107 417	1 - 10 mbar		≤ 0,5 mbar
	LGW 50 A2	107 425	2,5 - 50 mbar		≤ 1 mbar
	LGW 150 A2	107 433	30 - 150 mbar		≤ 3 mbar
<b>LGW...A2P Differential pressure switch</b>	LGW 3 A2P	120 204	0,4 - 3 mbar		≤ 0,3 mbar
	LGW 10 A2P	120 212	1 - 10 mbar		≤ 0,5 mbar
	LGW 50 A2P	221 207	2,5 - 50 mbar		≤ 1 mbar
	LGW 150 A2P	120 238	30 - 150 mbar		≤ 3 mbar
<b>LGW...A2-7 Differential pressure switch</b>	LGW 1,5 A2-7	257 434	20 - 150 Pa		≤ 18 Pa
	LGW 3 A2-7	257 435	20 - 300 Pa		≤ 20 Pa
	LGW 6 A2-7	257 436	30 - 600 Pa		≤ 30 Pa
	LGW 10 A2-7	257 437	0,1 - 1 kPa		≤ 40 Pa
	LGW 30 A2-7	257 438	0,2 - 3 kPa		≤ 80 Pa

**Accessories for  
LGW...A2, LGW...A2P**

Kit: G3 equipment plug, 3-pin without ground	231 770
Line socket, 3-pin + E, grey GDMW	210 318
KlimaSet accessories KS A2-7	258 247
G 1/8 screw-in gland	230 278
G 1/4 screw-in gland	230 279
Additional test button, complete PT 4	224 940
Attachment plate	230 301
Mounting kit glow lamp 230 V yellow	231 773
Mounting kit glow lamp 120 V yellow	231 772
Mounting kit display-LED 24 V yellow	231 774
Mounting kit glow lamp 230 V green	248 239
Mounting kit display-LED 24 V yellow	248 240
Replacement-set hood IP 65	257 841

We reserve the right to make any changes in the interest of technical progress.



**Head Offices and Factory**  
Karl Dungs GmbH & Co. KG  
Siemensstraße 6-10  
D-73660 Urbach, Germany  
Telephone +49 (0)7181-804-0  
Telefax +49 (0)7181-804-166

**Postal address**  
Karl Dungs GmbH & Co. KG  
Postfach 12 29  
D-73602 Schorndorf, Germany  
e-mail [info@dungs.com](mailto:info@dungs.com)  
Internet [www.dungs.com](http://www.dungs.com)