

Elstein IRS rod heaters are ceramic infrared heaters, designed for operating temperatures of up to 650 °C. With the help of MPO and MPO/2 mounting profiles, surface ratings of up to 72.0 kW/m² can be realised.

IRS series heaters have one mounting socket on each side, with which they can be fixed to a mounting profile with fixing springs.

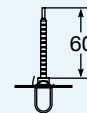
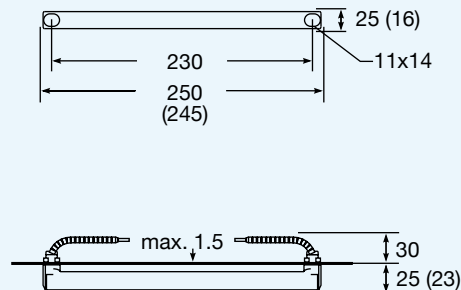
The rod shaped design makes IRS heaters preferably suitable for linear heating tasks.

An example for linear heating tasks can be found in the timber industry, where IRS rod heaters are used to pre-heat edge strips.

Elstein IRS rod heaters are available in two designs and wattages of 400 and 600 W.

Figure 63: Elstein IRS series

IRS



IRS/2

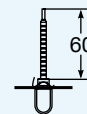
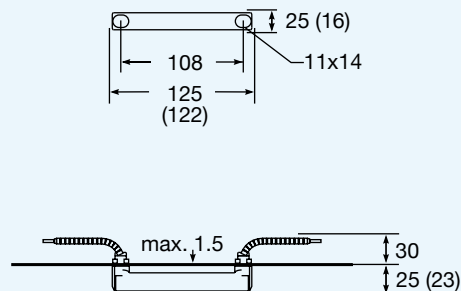
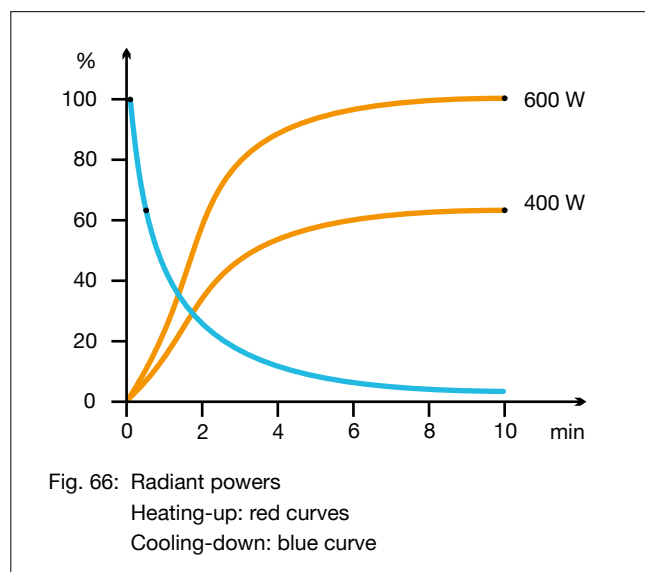
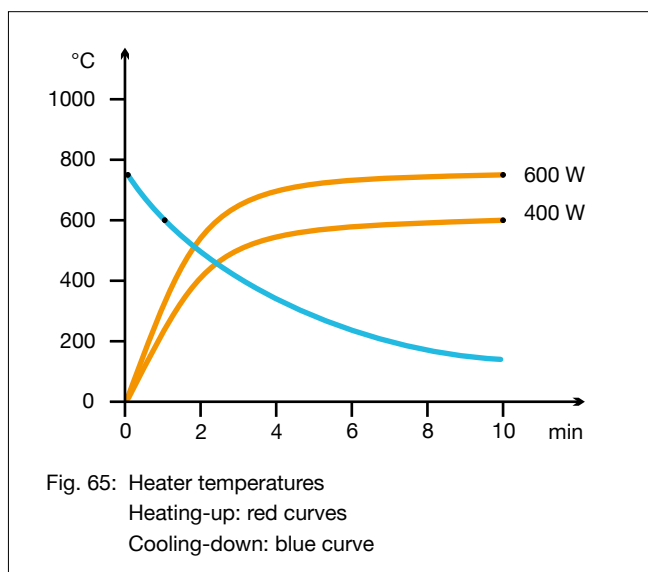



Figure 64: Mounting dimensions and heater dimensions () in mm



Type, weight, wattage	IRS	95 g	400	600	W
	IRS/2	50 g	200	300	W
Installable surface rating			48.0	72.0	kW/m ²
Typical operating temperature			to 550	to 650	°C
Maximum permissible temperature			750	750	°C
Wavelength range			2 - 10		µm

<p>Standard design</p> <p>Operating voltage 230 V Leads 60 mm Two mounting sockets Two fixing springs</p>	<p>Thermocouple heaters</p> <p>Designation T-IRS, T-IRS/2 Integrated thermocouple Type K (NiCr-Ni) TC leads 100 mm</p> 	<p>Variants</p> <p>Special wattages Special voltages Extended leads Leads with ring terminals</p>
---------------------------------------------------------------------------------------------------------------------------------------------------------------------	----------------------------------------------------------------------------------------------------------------------------------------------------------------------------------------------------------------------------------------------------------------------	-------------------------------------------------------------------------------------------------------------------------------------------------------------

The power can be controlled using thermocouple heaters together with TRD 1 temperature controllers, TSE thyristor switching units and other accessories.

IR radiation areas can be assembled using MPO mounting profiles.

The national safety regulations must be complied with for the respective application, for example, the IEC or EN standard 60519-1, Safety in electrical heating installations.

Our instructions for mounting, operation and safety must be observed.