

# Miniature Linear Guides

## Long Blocks, Light Preload

= For customers using industry standard products =  
  frame-surrounded products are compliant with the industry standard specifications (Stainless Steel, Light Preload, High Grade Type). Select the block from this spec.

Similar Products Comparison Points | The industry standard Long Block Type. Select from Light Preload Types with superior precision and rigidity.

### Industry Standard



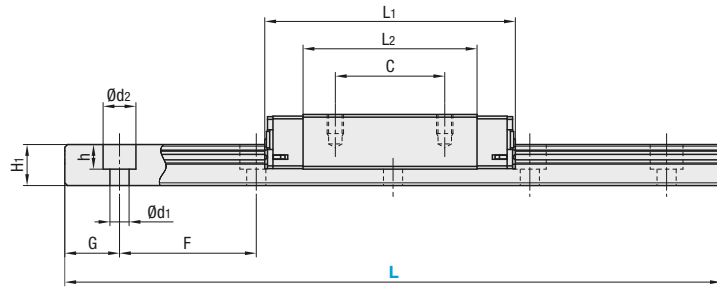
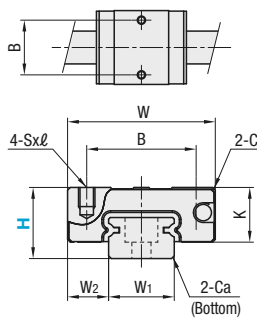
Material Hardness	Type			L Dimension	Number of Blocks
	Light Preload		Slight Clearance Standard Grade		
	High Grade	Precision Grade			
Stainless Steel 56HRC~	SSELB	SSELBV	SSELBZ	Selectable	1
	SSEL2B	SSEL2BV	SSEL2BZ	Selectable	2
	SSELBL	SSELBLV	SSELBLZ	Configurable	1
	SSEL2BL	SSEL2BLV	SSEL2BLZ	Configurable	2
Carbon Steel 58HRC~	SELB	SELBV	SELBZ	Selectable	1
	SEL2B	SEL2BV	SEL2BZ	Selectable	2
	SELBL	SELBLV	SELBLZ	Configurable	1
	SEL2BL	SEL2BLV	SEL2BLZ	Configurable	2

Heat Resistant Temperature: -20 ~ 80°C  
 \*H6 is for stainless steel (High Grade) only.



- This Type has the same fitting dimensions as the other company products, and thus, can be substituted for them.
- Blocks and rails are not sold as separate items. This Type has guaranteed radial clearances and accuracies as sets of blocks and rails.

#### H6 Type



\*For L Configurable, G dimensions differ from those shown in the table below. For details, see P.531.

#### Precautions for Use

- Blocks are equipped with retainers (wire) to prevent balls from falling off. For how to handle the blocks, see P.525.
- Radial clearances and accuracies are not guaranteed if the blocks and rails are interchanged from the original set combinations.
- Straight grooves are provided on datum planes. Be sure to match the datum lines when using.
- Rails cannot be connected end to end.
- The accuracy of Linear Guides is guaranteed after mounting the rail (after fastening screws on the rail and pushing it onto the datum plane).
- Minor bending of the rail will be adjusted after being mounted and will not affect the performance.

#### Accessory

- H6 comes with Number 0, Class 1 Phillips button head screws (M2x6).
- H8 comes with cap screws (M2x6).

#### Others

- Filled with Lithium soap based grease (Multemp Grease PS2 by Kyodo Yushi Co., Ltd.).
- For operating life calculation, see P.527.
- For operating life calculations, use our free calculation software from [http://download.misumi.jp/mol/fa\\_soft.html](http://download.misumi.jp/mol/fa_soft.html).

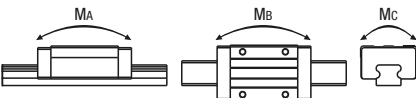
Part Number	Type	H	L	Block Dimension						Guide Rail Dimension								
				W	L1	B	C	Sxℓ	L2	K	Cb	W1	W2	H1	Ca	Counterbored Hole d1xd2xh	F	G
Stainless Steel Industry Standard Specifications	SSELB SSEL2B SSELBL SSEL2BL	6	40~100 (70)	12	21	8	-	M2x1.5	13.3	4.5	0.3	5	3.5	4	0.3	2.4x3.5x1	15	5
			8	17	32	12	13	M2x2.5	22	6.5	0.3	7	5	4.7	0.3	2.4x4.2x2.3	15	5
			10	20	40	15	16	M3x3	29	7.8	0.3	9	5.5	5.5	0.3	3.5x6x3.5	20	7.5
Carbon Steel	SELB SEL2B SELBL SEL2BL	13	70~470 (120)	27	45.8	20	20	M3x3.5	31.8	10	0.5	12	7.5	7.5	0.5	3.5x6x4.5	25	10
			16	32	58.3	25	25	M3x4	43.3	12	0.5	15	8.5	9.5	0.5	3.5x6x4.5	40	15
			20	40	67.7	30	30	M4x6	52.3	15	0.5	20	10	11	0.5	6x9.5x5.5	60	20

\*Dimensions in ( ) are for 2-Block Type.

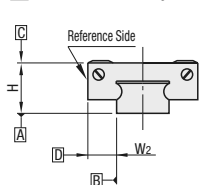
- Stainless Steel Industry Standard Specifications: SSELB, SSEL2B, SSELBL, SSEL2BL
- Carbon Steel: SELB, SEL2B, SELBL, SEL2BL

kgf=Nx0.101972

H	Basic Load Rating/Allowable Static Moment			Mass			
	C (Dynamic) kN	Co (Static) kN	MA N·m	Mb N·m	Mc N·m	Block kg	Guide Rail kg/m
6	0.6	1.0	1.8	1.8	2.3	0.005	0.13
8	1.6	2.4	7.5	7.5	9.0	0.016	0.19
10	2.2	3.7	12.3	12.3	13.0	0.03	0.31
13	3.5	5.3	24.5	26.4	32.3	0.06	0.61
16	5.8	8.7	57.8	62.6	67.6	0.10	1.02
20	7.2	13.5	80.7	80.7	138.2	0.18	1.65



#### Preload and Accuracy Standards



Specifications	Light Preload, High Grade	Light Preload, Precision Grade	Slight Clearance Standard Grade
Radial Clearance	-3~0	0~+15	
Height H Tolerance	±20	±10	±20
Pair Variation of Height H	15	7	40
Width W2 Tolerance	±25	±15	±25
Pair Variation of Width W2	20	10	40
Running Parallelism of Plane C against Plane A	See P.525		
Running Parallelism of Plane D against Plane A	See P.525		

\*Slight Clearance Type has clearance (Gap) between rails and blocks. If precision / rigidity is required, select Light Preload Type.

H	L	Unit Price							
		Stainless Steel				Carbon Steel			
		SSELB	SSEL2B	SSELBZ	SSEL2BZ	SELB	SEL2B	SELBZ	SEL2BZ
6	40	-	-	-	-	-	-	-	-
	55	-	-	-	-	-	-	-	-
	70	-	-	-	-	-	-	-	-
	85	-	-	-	-	-	-	-	-
	100	-	-	-	-	-	-	-	-
8	40	-	-	-	-	-	-	-	-
	55	-	-	-	-	-	-	-	-
	70	-	-	-	-	-	-	-	-
	85	-	-	-	-	-	-	-	-
	100	-	-	-	-	-	-	-	-
10	115	-	-	-	-	-	-	-	-
	130	-	-	-	-	-	-	-	-
	135	-	-	-	-	-	-	-	-
	155	-	-	-	-	-	-	-	-
	175	-	-	-	-	-	-	-	-
	195	-	-	-	-	-	-	-	-
	215	-	-	-	-	-	-	-	-
	235	-	-	-	-	-	-	-	-
	255	-	-	-	-	-	-	-	-
	275	-	-	-	-	-	-	-	-
13	70	-	-	-	-	-	-	-	-
	95	-	-	-	-	-	-	-	-
	120	-	-	-	-	-	-	-	-
	145	-	-	-	-	-	-	-	-
	170	-	-	-	-	-	-	-	-
	195	-	-	-	-	-	-	-	-
	220	-	-	-	-	-	-	-	-
	245	-	-	-	-	-	-	-	-
	270	-	-	-	-	-	-	-	-
	295	-	-	-	-	-	-	-	-
	320	-	-	-	-	-	-	-	-
	345	-	-	-	-	-	-	-	-
	370	-	-	-	-	-	-	-	-
	395	-	-	-	-	-	-	-	-
	420	-	-	-	-	-	-	-	-
445	-	-	-	-	-	-	-	-	
470	-	-	-	-	-	-	-	-	
16	110	-	-	-	-	-	-	-	-
	150	-	-	-	-	-	-	-	-
	190	-	-	-	-	-	-	-	-
	230	-	-	-	-	-	-	-	-
	270	-	-	-	-	-	-	-	-
	310	-	-	-	-	-	-	-	-
	350	-	-	-	-	-	-	-	-
	390	-	-	-	-	-	-	-	-
	430	-	-	-	-	-	-	-	-
	470	-	-	-	-	-	-	-	-
	510	-	-	-	-	-	-	-	-
	550	-	-	-	-	-	-	-	-
	590	-	-	-	-	-	-	-	-
	630	-	-	-	-	-	-	-	-
	670	-	-	-	-	-	-	-	-
160	-	-	-	-	-	-	-	-	
220	-	-	-	-	-	-	-	-	
280	-	-	-	-	-	-	-	-	
340	-	-	-	-	-	-	-	-	
400	-	-	-	-	-	-	-	-	
460	-	-	-	-	-	-	-	-	
520	-	-	-	-	-	-	-	-	
580	-	-	-	-	-	-	-	-	
640	-	-	-	-	-	-	-	-	
700	-	-	-	-	-	-	-	-	



Part Number - L  
 Example: SSELB10 - 275 (LTBC Plating)  
 RSELB10 - 75 (L Type Greased)  
 SSELB10L - 75 (G Type Greased)  
 SSELB10G - 75  
 LTBC Plating and various Grease types available as alternative.  
 P.531



Part Number - L - (MC, RLC, LLC, WC, B3, B4)  
 Example: SSEL2BL16 - 450 - MC

Alterations	Code	Spec.																
Tapped Hole	MC	Changes the rail mounting holes from counterbored holes to tapped holes. <table border="1"> <tr><th>H</th><th>MC</th><th>H</th><th>MC</th></tr> <tr><td>6</td><td>M2.6</td><td>13</td><td>M4</td></tr> <tr><td>8</td><td>M3</td><td>16</td><td>M5</td></tr> <tr><td>10</td><td>M4</td><td>20</td><td>M6</td></tr> </table>	H	MC	H	MC	6	M2.6	13	M4	8	M3	16	M5	10	M4	20	M6
H	MC	H	MC															
6	M2.6	13	M4															
8	M3	16	M5															
10	M4	20	M6															
Rail End Cut:	LLC, RLC	Cuts rail ends. Left End Cut: LLC Right End Cut: RLC Rail is cut with the product ID facing out (datum on other side). <table border="1"> <tr><th>H</th><th>L Cut</th><th>N</th></tr> <tr><td>10</td><td>2.5</td><td>-</td></tr> <tr><td>13</td><td>5</td><td>5</td></tr> <tr><td>16</td><td>10</td><td>-</td></tr> </table> *Applicable to Selectable Type only. *Overall length will be shorter by cutting. *Not applicable to H6, 8, 20.	H	L Cut	N	10	2.5	-	13	5	5	16	10	-				
H	L Cut	N																
10	2.5	-																
13	5	5																
16	10	-																
Parallel Use of 2 Rails	WC	Pair variation of Height H between 2 rails is set within 15µm. Rails are shipped in pairs. *Specify the actual rail quantity (even number) to order, not "pairs". *Applicable to High Grade Type only. *Not applicable to low temperature chrome plated products.																
3-Block Specifications	B3	Add 2 blocks to 1-block product to ship as 3-block separate item. *There are restrictions for the L dimension length. See "Selectable Shortest Rail Length" for details. Selection Example: SSELB10-215-B3																
4-Block Specifications	B4	Add 3 blocks to 1-block product to ship as 4-block separate item. *There are restrictions for the L dimension length. See "Selectable Shortest Rail Length" for details. Selection Example: SELBZ13-220-B4																

H	B3: Price Adder		B4: Price Adder		H	B3 (3-block)	B4 (4-block)
	Stainless Steel	Carbon Steel	Stainless Steel	Carbon Steel			
8					6	85	-
10					8	115	-
13					10	155	195
16					13	170	220
20					16	230	270
					20	280	340

\*Not applicable to H6.

#### Options for Linear Guide

Position Retaining Parts	Block / Rail Fixing Parts

#### L Dimension Configurable Type (1mm Increment)

H	L	Unit Price			
		Stainless Steel		Carbon Steel	
		SSELBL	SSEL2BL	SELBL	SEL2BL
6					
8					
10					
13					
16					
20					

\*For calculation of L Dimension Configurable Type (1mm Increment), add the above amount to the unit price of the Selectable Type longer than, and closest to this L Dimension Configurable Type.