

“Mickey mouse” profile with TEE-slots cylinders to ISO 15552 standard Ø 32 ÷ 100

series XT

1

DESCRIPTION

Cylinders series “XT”, and their fixing accessories comply with ISO 15552 standard, being in this way completely interchangeable with the former cylinders to ISO 6431/VDMA 24562 standard. They are available in the bores from Ø 32 to Ø 100 with techno-polymer piston as standard and the barrel, a profile in extruded aluminium alloy “mickey mouse” style, has two TEE-slots on one side where it's possible to mount directly the magnetic sensors series “FM100”. Upon request, cylinders series “XT” comply with ATEX directive, 2GD category.

TECHNICAL DATA

| | |
|-----------------------------------|---|
| Operating pressure | 1 ÷ 10 bar |
| Working temperature | 0 ÷ +80° C (-35° C with dry air) 0 ÷ +150° C with seals for high temperatures (-10° C with dry air) |
| Fluid | Compressed air, filtered, continuous lubricated, unlubricated or dry lubricated |
| Versions | Double acting, single acting front spring, single acting rear spring, through rod, double push tandem, double stroke tandem, opposed tandem |
| Bore | Ø 32, 40, 50, 63, 80, 100 |
| Port size | Ø 32 = G 1/8 Ø 40 - 50 = G 1/4 Ø 63 - 80 = G 3/8 Ø 100 = G 1/2 |
| Standard strokes (mm)* | 25, 50, 75, 80, 100, 125, 150, 160, 200, 250, 300, 320, 350, 400, 500, 550, 600, 650, 700, 800, 900, 1000 |
| Decelerators lenght | Ø 32 40 50 63 80 100 mm 24 29 29 35 35 40 |
| Max strokes (mm) | Ø 32 ÷ 100 = 3000; versione T, P, V = 1000 |
| Max strokes single act. (mm) | Ø 32 ÷ 63 = 50, Ø 80 - 100 = 100 |
| Spring theoretical tractive force | See technical data on page 0.13 |

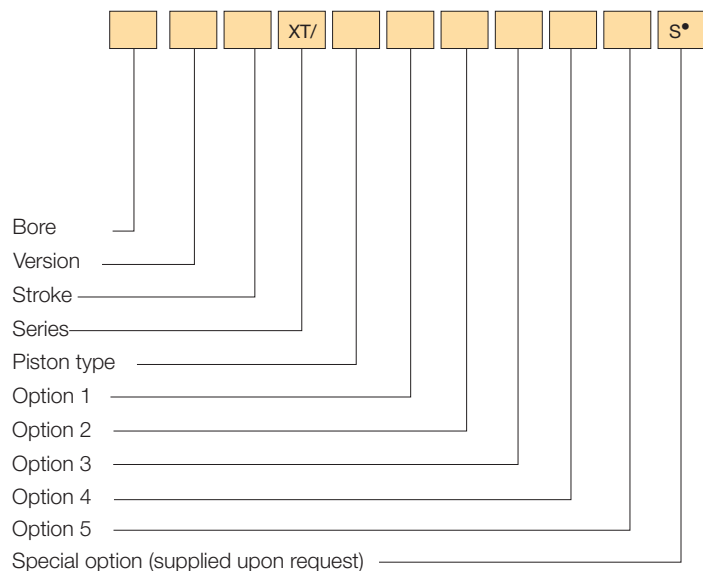
*Cylinders, with strokes shorter than the decelerators lengths, are NOT cushioned as standard.



MATERIALS

| | |
|--------------------|--|
| End caps | Painted die-cast aluminium alloy |
| Cylinder barrel | Extruded profile, 20 µm anodized aluminium alloy |
| Screws | Steel (self-forming) |
| Piston rod | C45 chromium-plated steel AISI 303 rolled stainless steel |
| Rod nut | Steel Stainless steel |
| Piston rod bearing | Bronze-iron 20%, sintered, self-lubricating |
| Piston | Techno-polymer (with or without magnet) Aluminium alloy (with or without magnet): for high temperatures, for applications without the effective use of the cushioning and for strokes over 1000 mm. |
| Seals | Polyurethane FKM (Viton®) |
| Cover strips | Polyvinylchloride |
| Springs | Spring steel |

ORDER KEY



• See chapter 1, page 1.1.

VERSION

| | |
|------------------------------|------------------------|
| / Double acting | T Double push tandem* |
| S Single acting front spring | P Double stroke tandem |
| Y Single acting rear spring | V Opposed tandem |
| R Through rod | |

PISTON TYPE

| | |
|----------------|--------------|
| N Non-magnetic | M Magnetic** |
|----------------|--------------|

OPTION 1

Z Fit for piston rod locking unit***

OPTION 2

| | |
|--|--|
| 1 Stainless steel piston rod and rod nut | 3 Stainless steel piston rod, rod nut and seals for high temperatures* |
| 2 Seals for high temperatures* | |

OPTION 3

4 Cover strips for magnetic sensors slots***

OPTION 4

5 Aluminium alloy piston

OPTION 5

/EX Consistent with the ATEX directive Ex II 2GD c T5 T100°C -35°C ≤ T_a ≤ 80°C

* Supplied only with aluminium alloy piston.

** Available even with “FKM” (Viton®) seals but just for applications where is needed a chemical compatibility; not available for high temperatures and ATEX.

*** Don't use it for high temperature application and ATEX.

ORDER EXAMPLES

Cylinder Ø 50, double acting, 100 mm stroke, non-magnetic piston type, fit for piston rod locking unit: **50/100 XT/NZ**

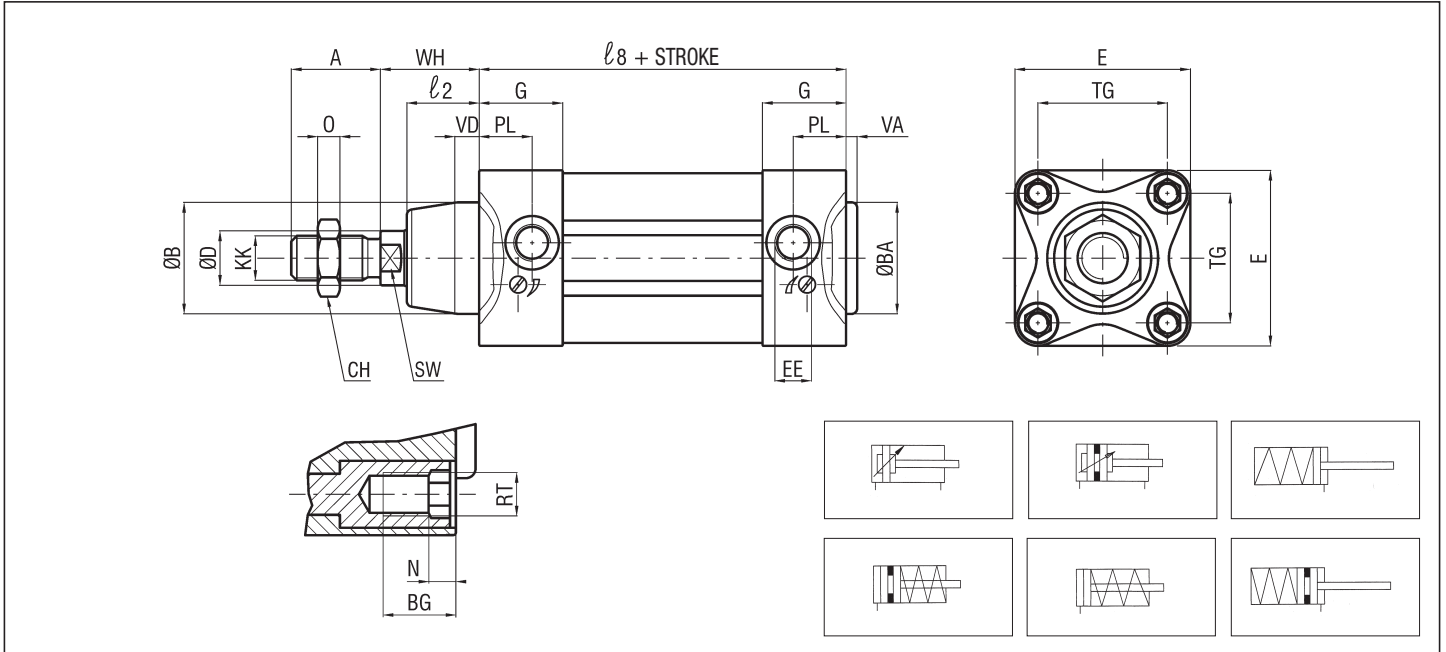
Cylinder Ø 63, through rod, 150 mm stroke, magnetic piston type, stainless steel piston rod with cover strips: **63R150 XT/M14**

SPARE PARTS

| | |
|-----------------------------------|-----------|
| SEALS KIT | |
| Polyurethane | Ø/SG/X |
| Through rod polyurethane | Ø/SG/R/X |
| For high temperatures | Ø/SG/X2 |
| Through rod for high temperatures | Ø/SG/R/X2 |

1

XT BASIC CYLINDER



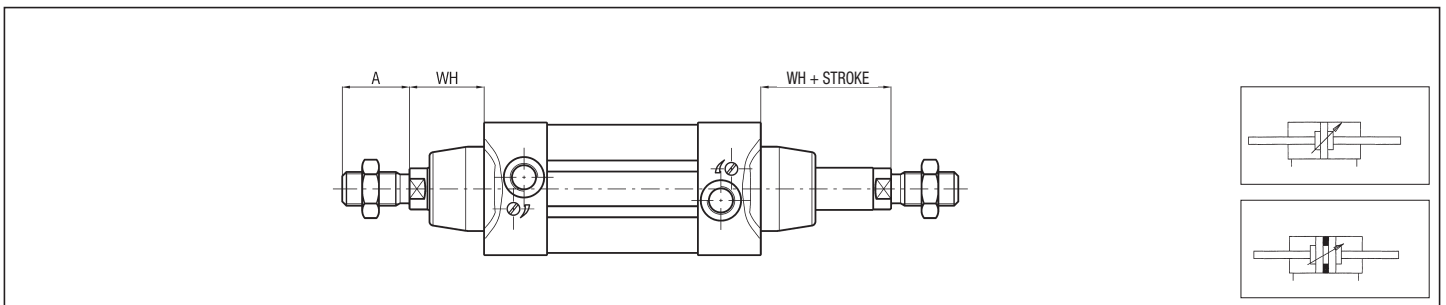
P.S.: Rod nut supplied as standard

DIMENSIONS AND WEIGHTS BASIC CYLINDER

| \varnothing | A* | BA* B* | BG* | CH | D | E* | EE* | G | KK* | l | $l2^*$ | $l8^*$ | N | O | PL* | R | RT* | SW* | TG* | VA* VD* | WB | WH* | WEIGHT (g) | INCR. (g) every 10 mm |
|---------------|----|-----------|-----|----|----|-----|------|------|----------|-----|--------|--------|-----|---|------|---|-----|-----|------|------------|-----|-----|---------------|--------------------------|
| 32 | 22 | 30 | 16 | 17 | 12 | 47 | G1/8 | 27 | M10x1,25 | 175 | 20 | 94 | 5,5 | 6 | 18 | 9 | M6 | 10 | 32,5 | 3 | 86 | 26 | 533 | 23 |
| 40 | 24 | 35 | 16 | 19 | 16 | 52 | G1/4 | 31 | M12x1,25 | 201 | 22 | 105 | 5,5 | 7 | 20,5 | 9 | M6 | 13 | 38 | 3 | 100 | 30 | 777 | 32 |
| 50 | 32 | 40 | 16 | 24 | 20 | 63 | G1/4 | 30 | M16x1,5 | 191 | 26 | 106 | 5,5 | 8 | 19 | 9 | M8 | 17 | 46,5 | 3 | 127 | 37 | 1148 | 45 |
| 63 | 32 | 45 | 16 | 24 | 20 | 75 | G3/8 | 35,5 | M16x1,5 | 217 | 27 | 121 | 6,5 | 8 | 22 | 9 | M8 | 17 | 56,5 | 4 | 127 | 37 | 1621 | 48 |
| 80 | 40 | 45 | 16 | 30 | 25 | 93 | G3/8 | 36 | M20x1,5 | 240 | 29 | 128 | 6,5 | 9 | 23 | 9 | M10 | 22 | 72 | 4 | 156 | 46 | 2569 | 67 |
| 100 | 40 | 55 | 16 | 30 | 25 | 113 | G1/2 | 39 | M20x1,5 | 258 | 35 | 138 | 6,5 | 9 | 24 | 9 | M10 | 22 | 89 | 4 | 161 | 51 | 3550 | 77 |

* STANDARDIZED DIMENSIONS

THROUGH ROD



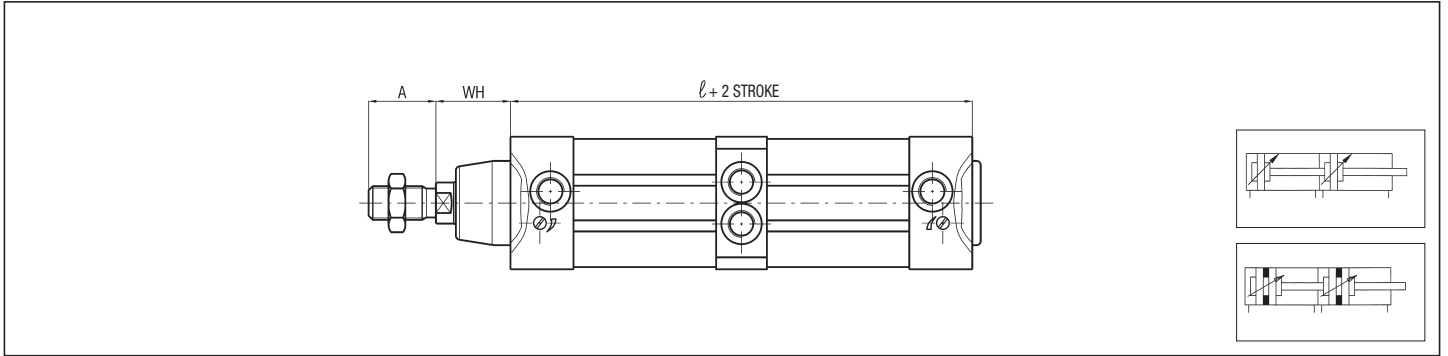
P.S.: Rod nut supplied as standard

**“Mickey mouse” profile
with TEE-slots cylinders
to ISO 15552 standard $\varnothing 32 \div 100$**

series XT

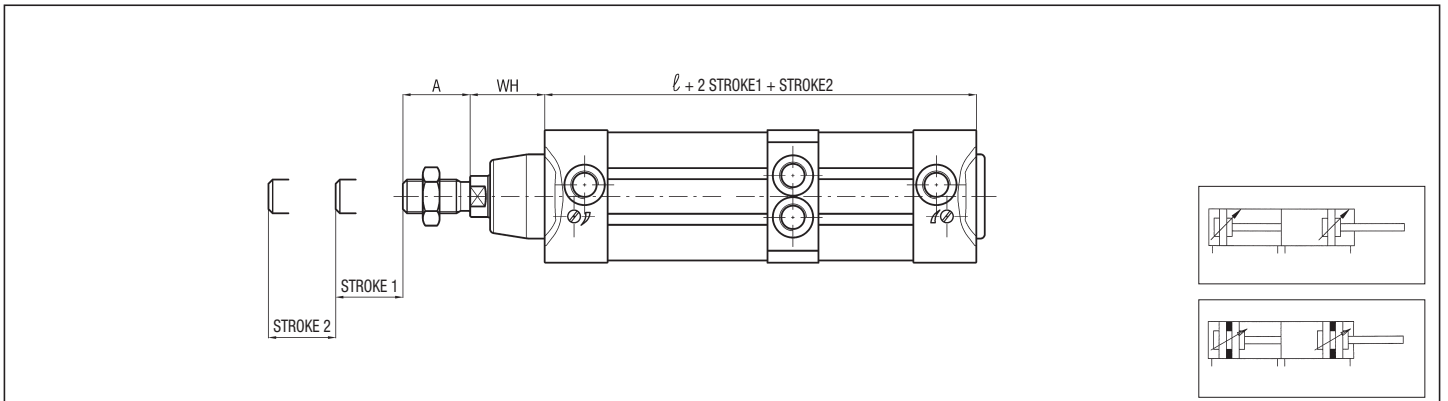
1

DOUBLE PUSH TANDEM



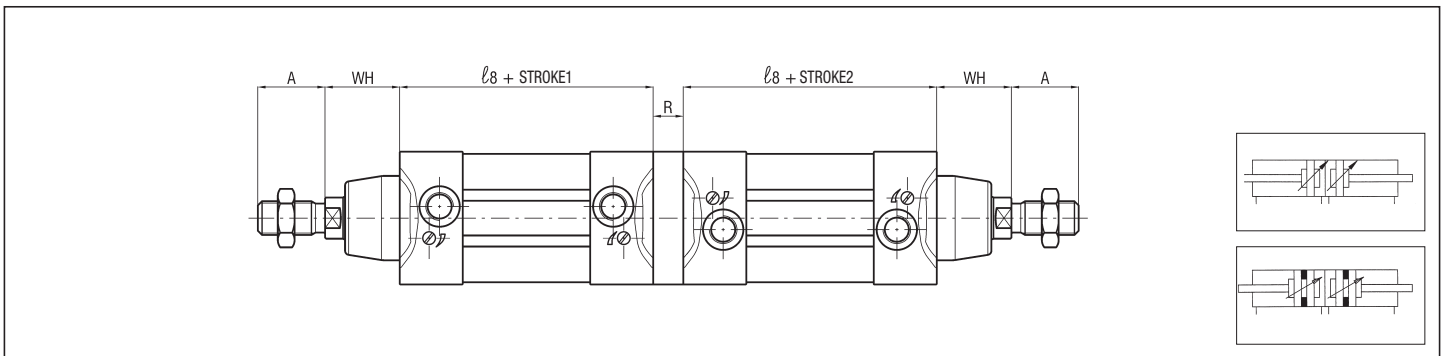
P.S.: Rod nut supplied as standard

DOUBLE STROKE TANDEM



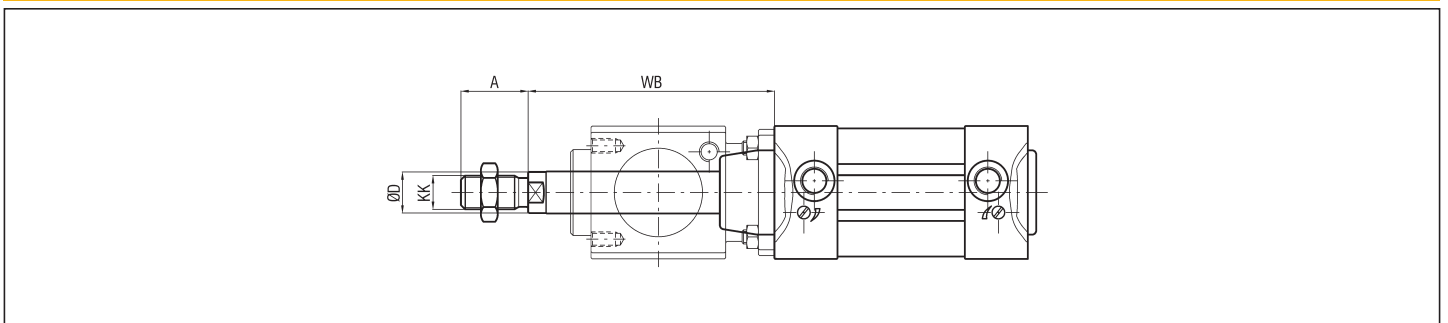
P.S.: Rod nut supplied as standard

OPPOSED TANDEM



P.S.: Rod nut supplied as standard

FIT FOR PISTON ROD LOCKING UNIT



P.S.: Rod nut supplied as standard